

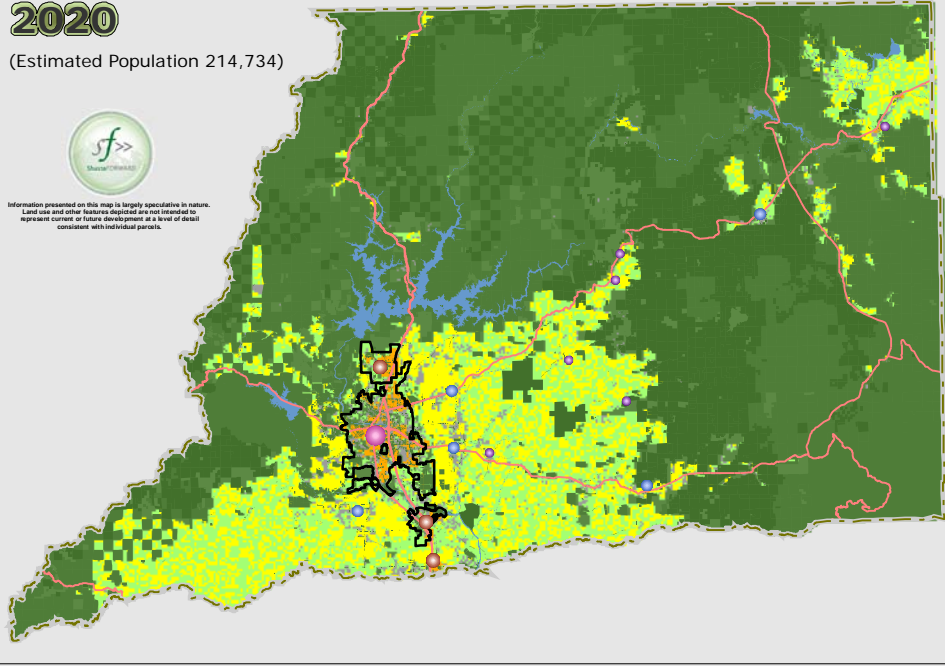
# Shasta County Alternative A Scenario 2020 - 2050 Series

**2020**

(Estimated Population 214,734)

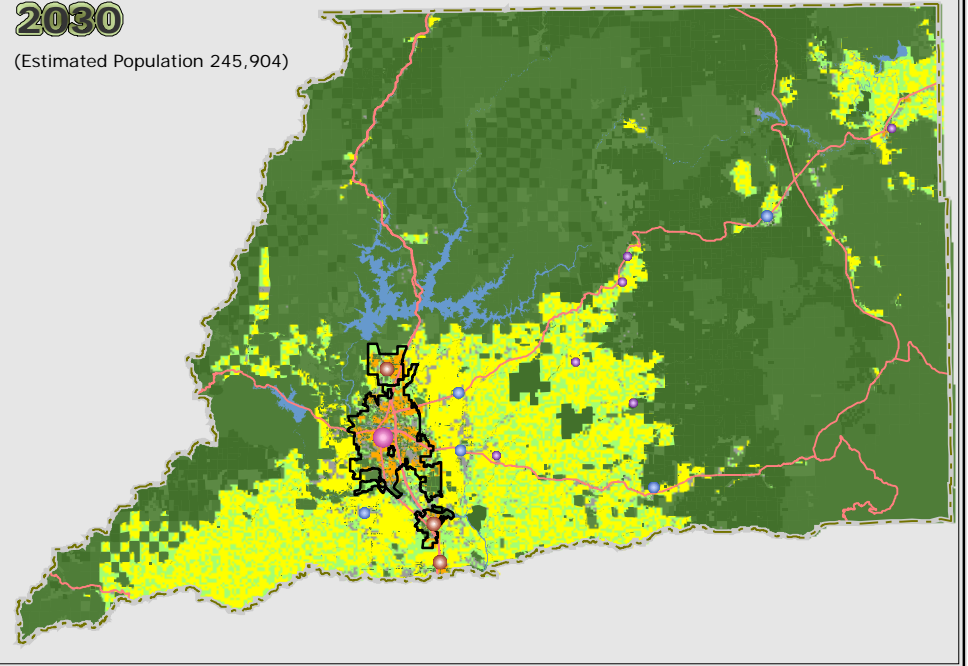


Information presented on this map is largely speculative in nature. Land use and other features depicted are not intended to represent current or future development at a level of detail consistent with individual permits.



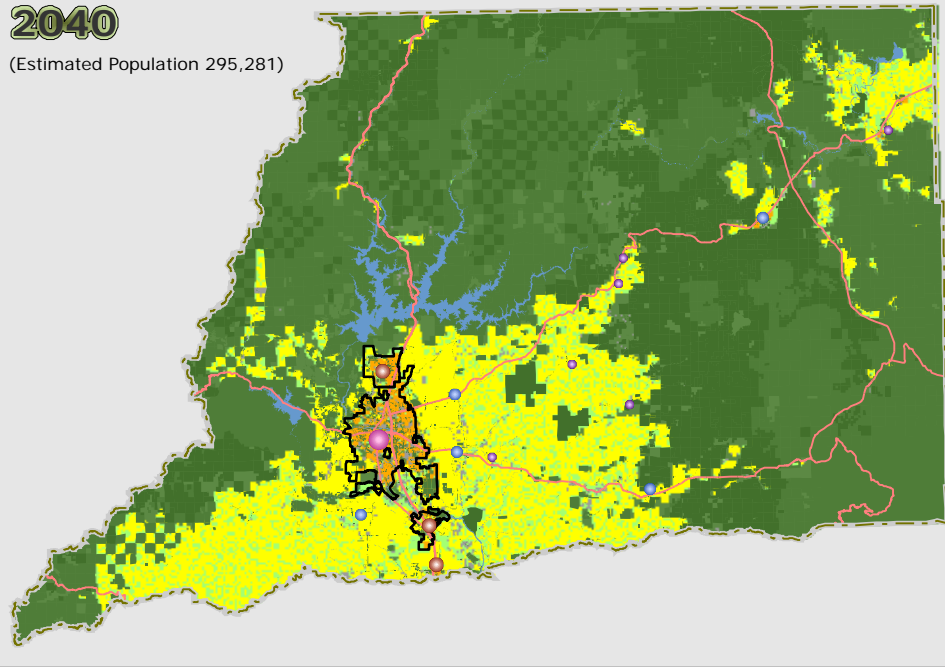
**2030**

(Estimated Population 245,904)



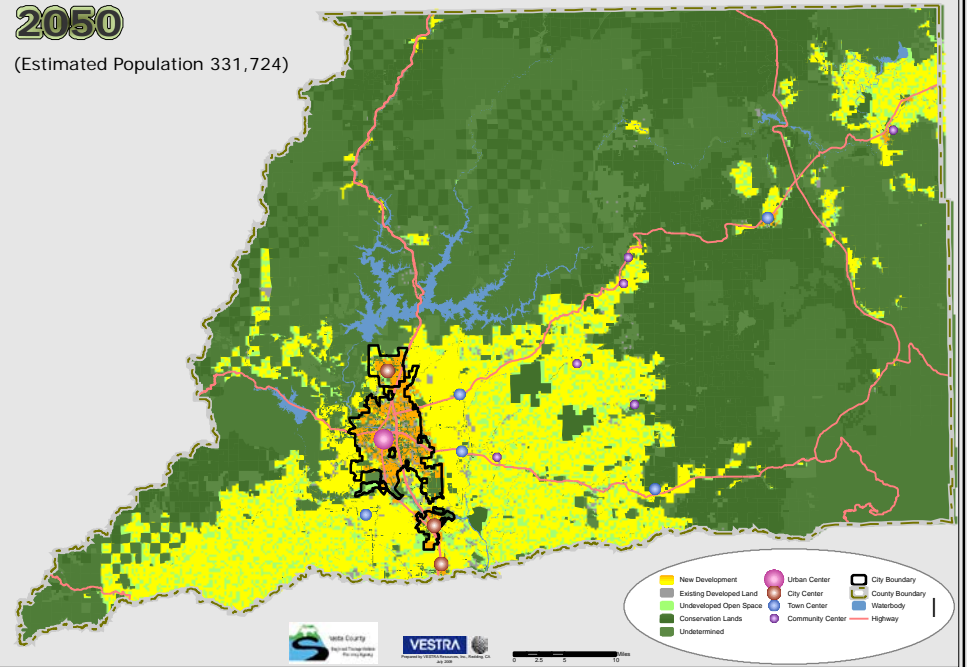
**2040**

(Estimated Population 295,281)



**2050**

(Estimated Population 331,724)



- New Development
- Existing Developed Land
- Undeveloped Open Space
- Conservation Lands
- Undetermined
- Urban Center
- City Center
- Town Center
- Community Center
- City Boundary
- County Boundary
- Waterbody
- Highway

