

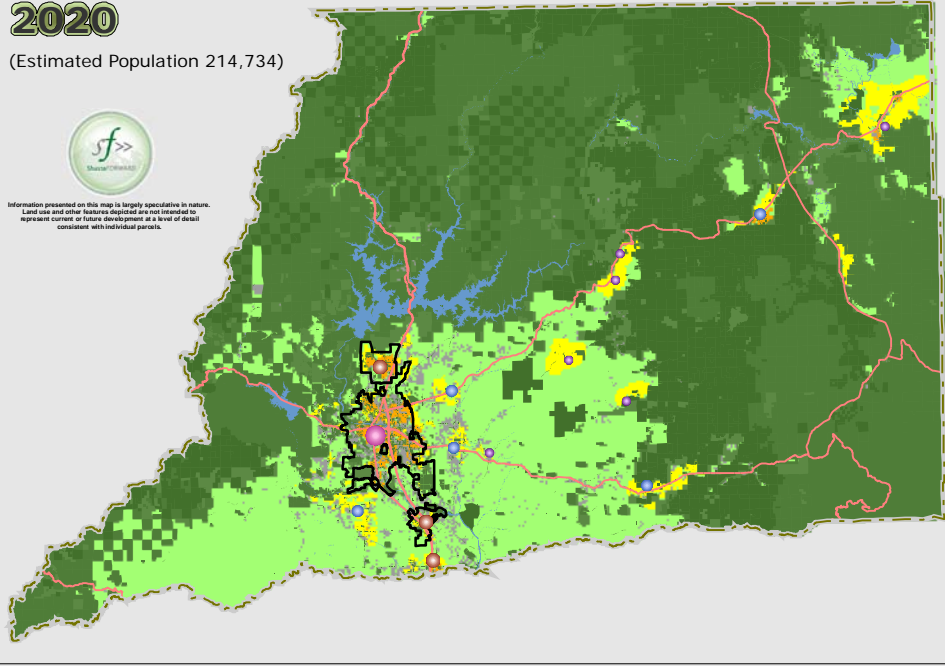
Shasta County Alternative C Scenario 2020 - 2050 Series

2020

(Estimated Population 214,734)

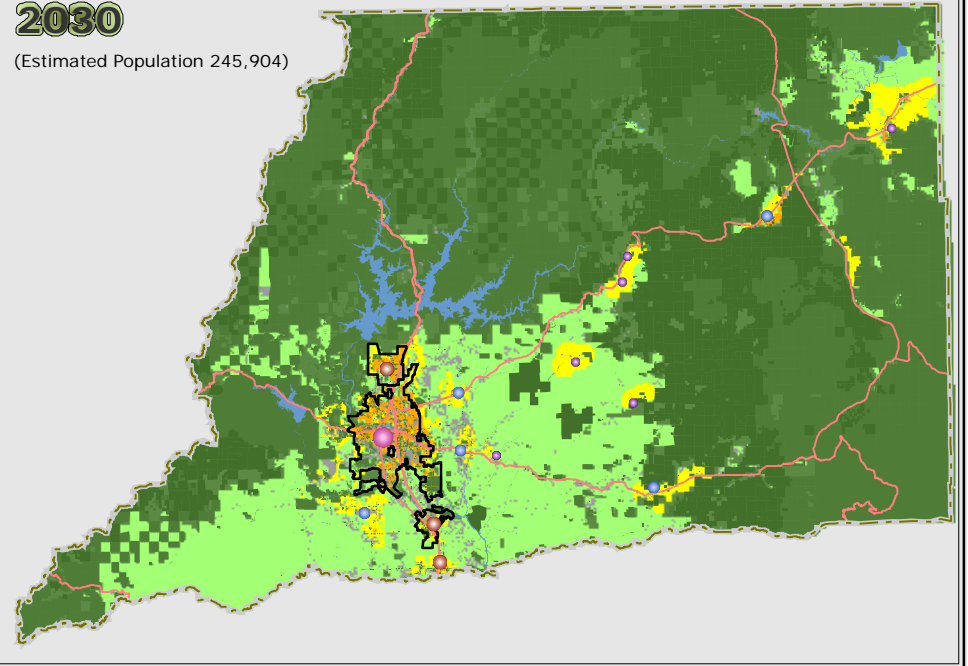


Information presented on this map is largely speculative in nature. Land use and other features depicted are not intended to represent current or future development at a level of detail consistent with individual permits.



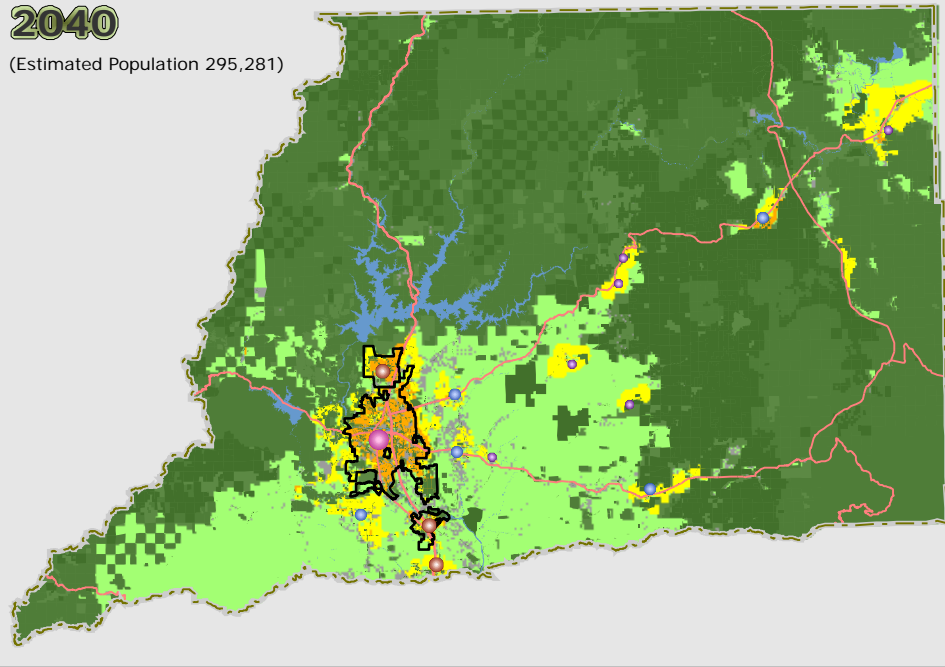
2030

(Estimated Population 245,904)



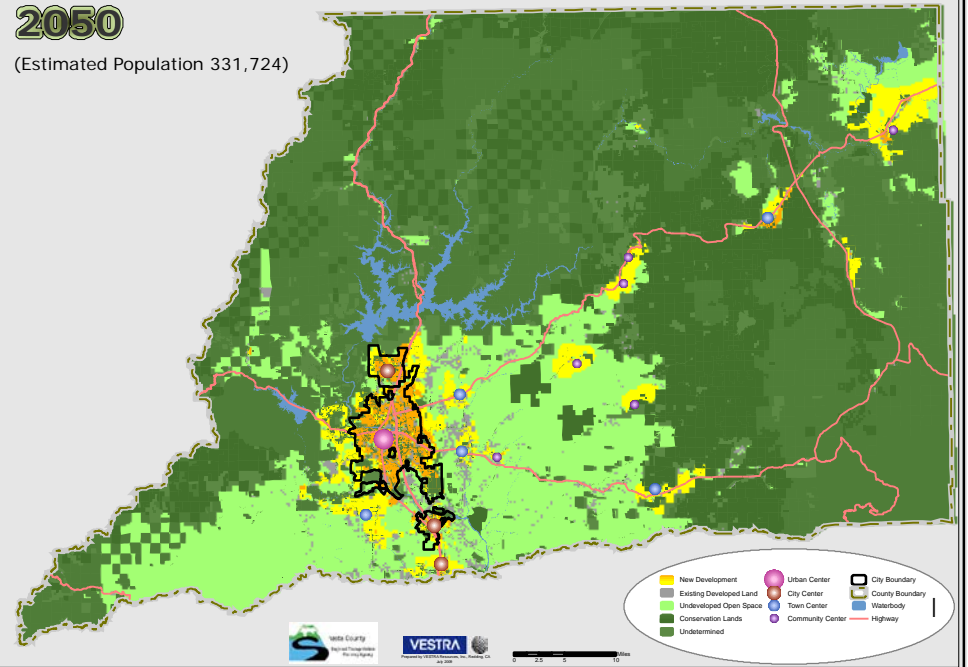
2040

(Estimated Population 295,281)



2050

(Estimated Population 331,724)



	New Development		Urban Center		City Boundary
	Existing Developed Land		City Center		County Boundary
	Undeveloped Open Space		Town Center		Waterbody
	Conservation Lands		Community Center		Highway
	Undetermined				

Shasta County Planning Department

VESTRA